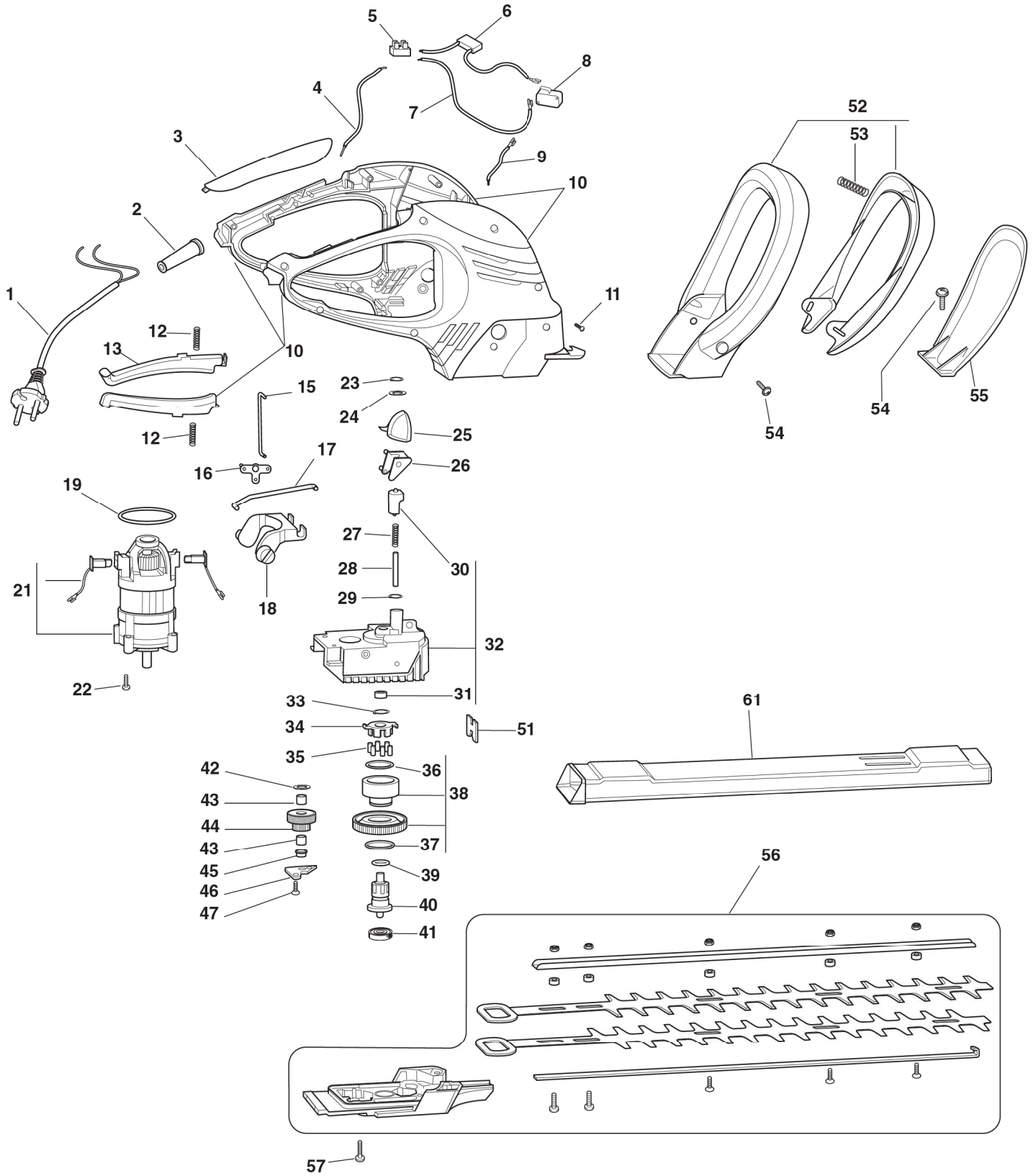


EHT 600



2009
TS004.0
1 / 4

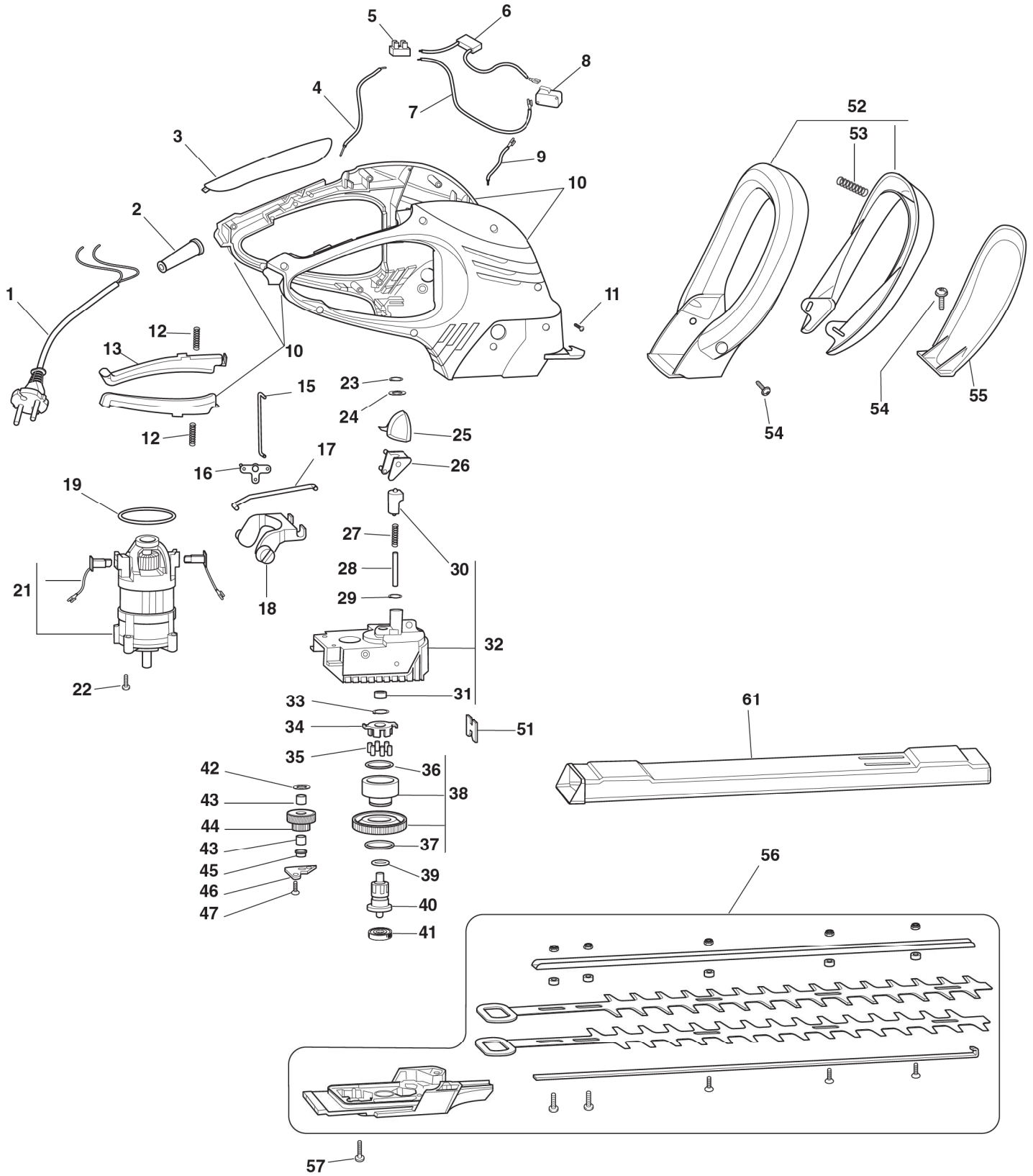


POS.	CODE	Q.TY	DESCRIZIONE	DESCRIPTION	DESCRIPTION	BESCHREIBUNG	REMARKS
1	1911-1488-01	1	ASS. CAVO ALIMENTAZIONE	POWER CORD ASSY	ENS. CÂBLE ALIM.	SATZ NETZKABEL	
2	1911-1066-01	1	PASSACAVO ALIMENTAZIONE	CORD PROTECTOR	PASSE-CÂBLE ALIM.	LIPPKLAMPE VERSOR- GUNG	HONDA GX 35
3	1911-1508-01	1	IMPUGNATURA	HANDLE	POIGNÉE	HANDGRIFF	
4	1911-1526-01	1	CAVO	CABLE	CABLES	KABEL	
5	1911-1104-01	1	CAVO	CABLE	CABLES	KABEL	
6	1911-1525-01	1	CONDENSATORE	CAPACITOR	CONDENSATEUR	KONDENSATOR	
7	1911-1523-01	1	CAVO	CABLE	CABLES	KABEL	
8	1911-1524-01	1	INTERRUTTORE	SWITCH	INTERRUPTEUR	SCHALTER	
9	1911-1619-01	1	CAVO	CABLE	CABLES	KABEL	
10	1911-1598-02	1	ASS. IMPUGNATURA ROSSO	HANDLE ASSY RED	ENS. POIGNÉE ROUGE	SATZ ROTER GRIFF	
-	1911-1598-01	1	ASS. IMPUGNATURA GIALLO	HANDLE ASSY YELLOW	ENS. POIGNÉE JAUNE	SATZ GELBER GRIFF	
11	1911-1105-01	11	VITE	SCREW	VIS	SCHRAUBE	
12	1911-1083-01	2	MOLLA	SPRING	RESSORT	FEDER	
13	1911-1511-01	1	LEVA COMANDO INTERRUTTORE	SWITCH LEVER	LEVIER COMMANDE INTERRUP.	SCHALTERHEBEL	
15	1911-1538-01	1	ASTA	ROD	BARRE	STANGE	
16	1911-1516-01	1	LEVA	LEVER	LEVIER	HEBEL	
17	1911-1537-01	1	ASTA	ROD	BARRE	STANGE	
18	1911-1514-01	1	LEVA	GEARSHIFT	LEVIER	HEBEL	
19	1911-1520-01	1	ANELLO OR	O RING	O RING	O RING	
21	1911-1616-01	1	MOTORE	MOTOR	MOTEUR	MOTOR	
22	1911-1105-01	11	VITE	SCREW	VIS	SCHRAUBE	
23	1911-1567-01	1	ROSETTA	WASHER	RONDELLE	SCHEIBE	
24	1911-1529-01	1	ROSETTA	WASHER	RONDELLE	SCHEIBE	
25	1911-1518-01	1	INTERRUTTORE	SWITCH	INTERRUPTEUR	SCHALTER	
26	1911-1515-01	1	LEVA	GEARSHIFT	LEVIER	HEBEL	
27	1911-1530-01	1	MOLLA	SPRING	RESSORT	FEDER	
28	1911-1539-01	1	PERNO	PIN	PIVOT	BOLZEN	
29	1911-1528-01	1	ROSETTA	WASHER	RONDELLE	SCHEIBE	
30	1911-1621-01	1	TAPPO	CAP	BOUCHON	GUMMISTOPFEN	
31	1911-1546-01	1	BUSSOLA	BUSH	DOUILLE	BUCHSE	
32	1911-1564-01	1	GRUPPO TRASMISSIONE	TRANSMISSION UNIT	GROUPE TRANSMISSION	ANTRIEBSGRUPPE	
33	1911-1549-01	1	ANELLO ELASTICO	SNAP RING	ANNEAU RESSORT	SPRENGRING	
34	1911-1555-01	1	SUPPORTO ANTIVIBRANTE	SHOCK ABSORBER	SUPPORT ANTIVIBRA- TIONS	HALTER SCHWINGUNGSD.	
35	1911-1531-01	6	RULLINO	NEEDLE	ROULEAU	WALZE	
36	1911-1521-01	1	ANELLO OR	O RING	O RING	O RING	
37	1911-1489-01	1	ANELLO ELASTICO	SNAP RING	ANNEAU RESSORT	SPRENGRING	
38	1911-1543-01	1	RUOTA DENTATA	SPROCKET	COURONNE	ZAHNKETTENRAD	
39	1911-1522-01	1	ANELLO OR	O RING	O RING	O RING	
40	1911-1618-01	1	PIGNONE	PINION	PIGNON	RITZEL	
41	1911-1554-01	1	CUSCINETTO	BEARING	ROULEMENT	LAGER	
42	1911-1550-01	1	ROSETTA	WASHER	RONDELLE	SCHEIBE	
43	1911-1548-01	2	BUSSOLA	BUSH	DOUILLE	BUCHSE	
44	1911-1565-01	1	RUOTA DENTATA	SPROCKET	COURONNE	ZAHNKETTENRAD	
45	1911-1557-01	1	DISTANZIALE	SPACER	ENTRETOISE	DISTANZRING	
46	1911-1556-01	1	PIASTRINA	PLATE	PLAQUETTE	BLECH	
47	1911-1552-01	2	VITE	SCREW	VIS	SCHRAUBE	
51	1911-1532-01	1	PATTINO	SHOE	BLOC DE GLISSEMENT	GLEITBLOCK	

EHT 600



2009
TS004.0
3 / 4



POS.	CODE	Q.TY	DESCRIZIONE	DESCRIPTION	DESCRIPTION	BESCHREIBUNG	REMARKS
52	1911-1594-01	1	ASS. IMPUGNATURA	HANDLE ASS.Y	POIGNÉE	SET GRIFF	
53	1911-1551-01	2	MOLLA	SPRING	RESSORT	FEDER	
54	1911-1534-01	4	VITE	SCREW	VIS	SCHRAUBE	
55	1911-1517-01	1	PARAMANO	HAND GUARD	PROTÈGE-MAIN	HANDSCHUTZ	
56	1911-1615-01	1	LAME	BLADES	LAME	KLINGE	
57	1911-1533-01	4	VITE	SCREW	VIS	SCHRAUBE	
61	1911-1519-01	1	PROTEZIONE LAMA	BLADE GUARD	PROTECTEUR LAME	KLINGENSCHUTZ	